

NEW IN AUTOVUE ENTERPRISE VISUALIZATION, RELEASE 20.0

KEY FEATURES AND BENEFITS

TOP NEW FEATURES AND ENHANCEMENTS

- Work Offline mode
- 3D Walkthrough
- Performance improvements for multi page MS Word files
- Performance improvements for large MCAD & 3D AEC files
- Web Services based Integration SDK
- Align & scale drawings in 2D & EDA compare
- Usage tracking for systems administrators
- Enhanced 3D measurements & 3D section plane
- Improved fidelity and extended format support for MCAD, 2D CAD & EDA files

KEY BENEFITS

- Extend document visualization and collaboration to offline users
- Scale visualization from desktops to the enterprise
- Efficiently collaborate on all digital assets
- Boost the value of existing enterprise systems
- Improve business processes
- Enhance capital projects and facilities operations with 3D Walkthrough

Oracle's AutoVue Enterprise Visualization is the industry leading solution for viewing, reviewing and collaborating on asset and engineering documents and information across the global enterprise. AutoVue 20.0 boasts a brand new architecture allowing it to easily scale with an organization's evolving enterprise requirements and more efficiently serve the visualization and document collaboration needs of its enterprise and desktop users. AutoVue 20.0 also includes a compelling new 3D Walkthrough capability, which enables detailed reviews of 3D facilities, as well as many significant performance enhancements.

Scalable Deployment Options for all Enterprise Users

AutoVue solutions can serve as a single platform for document visualization across the global enterprise, whether for personal productivity on individual desktops or team productivity across applications and geographies. The re-designed architecture in release 20.0, allows AutoVue to be installed as either a desktop deployment on a single user's machine, or in a client server deployment, where AutoVue resides on a server to which a user's client machine connects to view and access documents. Users who choose to deploy AutoVue in the desktop deployment for their personal productivity can easily transition to the client-server deployment when their requirements evolve to include integration to enterprise applications, allowing them to leverage AutoVue's best in class integration framework.

Extend the Reach of Asset & Engineering Documents to Offline Users

With AutoVue 20.0 users can view and markup their asset and engineering documents in a new offline mode and can easily switch between online and offline modes of operation. While connected to the network or backend system users simply click on a button to select the Work Offline option, along with the files needed for offline work, and they are ready to leave the office. Field workers or business travelers can take documents on site or on the road, work offline, and then update their comments or feedback to enterprise systems once they are back online. Offline work can easily become part of a file's audit trail of updates and decisions.

Enhance Capital Projects & Facilities Operations with 3D Walkthrough

AutoVue 20.0 adds value to 3D investments by including new 3D Walkthrough capabilities, which allow users to perform detailed reviews of facilities from within and explore buildings and structures in a more natural way.

While in walkthrough mode, users can look at the attribute data of the complete

structure and also add markups and comments to specific areas of a building or facility which subsequent reviewers can view in the appropriate context. For example, if spatial interference is discovered within the building structure users can easily notify project team members via digital comments, which are captured and stored as part of the project's audit trail. Similarly, during maintenance operations, repair activity can be captured and documented within the facility model, taking the guesswork out of maintenance activities for engineers and repair technicians.

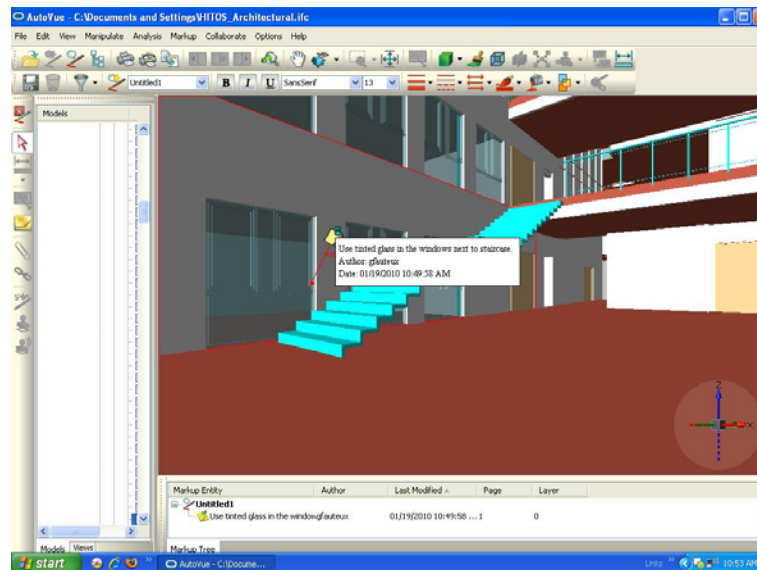


Figure 1. Add comments to building and facilities models during 3D Walkthrough

Performance Enhancements Drive Process Efficiency

Whether a PDF file or a complex CAD document, users need to view their documents quickly, so they can perform their jobs and complete their projects in a timely manner. Thanks to its re-designed architecture, which has been optimized for maximum performance, AutoVue 20.0 features significant performance improvements in the following areas:

Large Multi-page Word & 2D CAD Documents:

When opening large, multi-page Word documents with AutoVue 20.0, users will immediately see and can begin working with their document as soon as the first page loads. They can continue to scroll and work with the file while the remainder of the pages load in the background. Similar improvements have been made for large 2D CAD files, allowing users to immediately see a partial rendition of the file which they can work with and manipulate. Both of these enhancements save time and greatly improve personal productivity.

3D Large Model Handling:

AutoVue 20.0 has significantly reduced the memory usage required when opening large MCAD and 3D AEC files, allowing it to load much larger files. AutoVue 20.0 also includes improved rendering of 3D data and improved scalability. As such,

users can load and manipulate large MCAD models, and large 3D AEC files, such as 3D DWG, 3D DGN, and IFC faster, greatly improving their interaction with large 3D models.

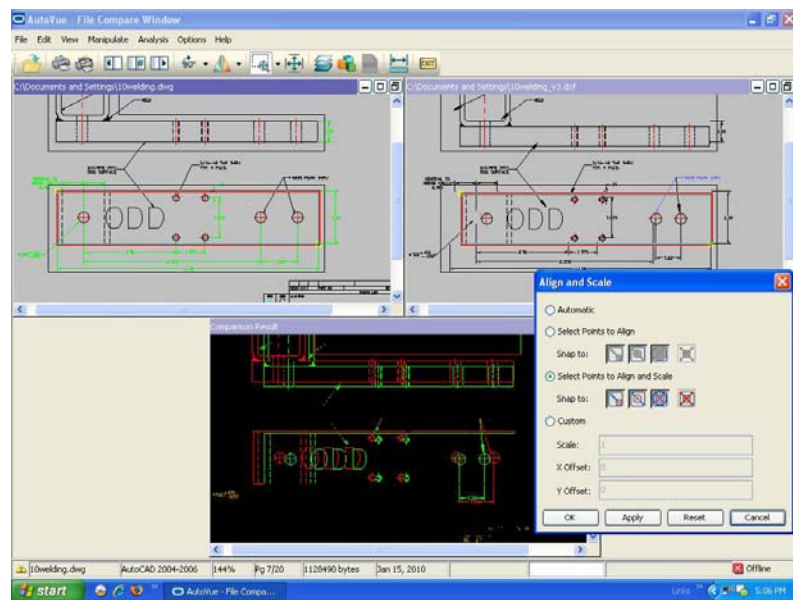


Figure 2. Easily align and scale 2D drawings during file comparisons.

Optimize Business Processes through AutoVue Integration in Any Development Environment

With AutoVue, digital asset documents flow throughout the entire extended enterprise in a variety of applications and processes. Using AutoVue's open and standards based integration capabilities, customers can integrate AutoVue into enterprise applications and can visually enable them to access documents stored in various content repositories across the enterprise.

AutoVue 20.0 includes a new Web Services based Integration SDK (iSDK) which allows customers and Systems Integrators to build and customize their own integrations in any deployment environment. Customers and SIs can now easily develop AutoVue integrations in deployment environments, such as .NET, and C++, in addition to Java, allowing them to take advantage of AutoVue's open and extensible integration framework. The new Web Services based iSDK can also be used to create integrations which leverage AutoVue IntelliStamp capabilities.

Revolutionize Review Processes with File Compare

Design and asset documents undergo numerous revisions during their lifetime and detecting what has changed between them is oftentimes overwhelming and nightmarish for users, particularly when dealing with complex files. AutoVue 20.0 can transform an organization's revision process and a team's ability to easily identify the delta between file versions, with its advanced and intelligent compare capabilities. Users working with 2D CAD or EDA files can now accurately and easily align and scale drawings while in compare mode, greatly facilitating file comparisons and the revision process.

**MAXIMIZE PRODUCTIVITY
WITH ENTERPRISE
INTEGRATION**

ORACLE'S AUTOVUE
ENTERPRISE
VISUALIZATION
SOLUTIONS

AutoVue solutions can be integrated into existing content management, product lifecycle management, or enterprise applications, such as ALM, & Project Planning to name a few. Integrated with existing enterprise systems, AutoVue connects information, people and processes, delivering anytime, anywhere access to vital information and maximizing business process efficiency.

Teams can better collaborate around their engineering and asset documents and make sound business decisions, driving innovation and operational efficiency.

RELATED PRODUCTS:

- AutoVue 2D Professional
- AutoVue 3D Professional Advanced
- AutoVue EDA Professional
- AutoVue Electro-Mechanical Professional
- AutoVue Office
- AutoVue Mobile
- AutoVue VueLink Integrations

Usage Tracking for Systems Administrators

In their license compliance efforts, IT departments require the ability to track usage of the deployed software solutions throughout their organization. AutoVue 20.0 provides a self-sufficient mechanism for systems administrators to track usage of all deployed AutoVue solutions in their organization. For Oracle customers using Oracle Enterprise Manager, AutoVue's usage tracking can also be integrated into their EM environment.

Extended Format Support & New 3D Capabilities:

In keeping with tradition, AutoVue 20.0 delivers world class and timely support for new formats; many fidelity improvements, particularly for PDF files; as well as several new 3D capabilities.

New 3D features include; enhanced 3D measurements, improved 3D section plane, the ability to restore to 3D default views, and the ability to search for all 3D entities that contain a given text string in their attribute names or values, greatly improving how mechanical users interact and interrogate their 3D models.

New format support delivered in AutoVue 20.0 includes:

- **MCAD formats** – Pro/Engineer WildFire 5, Unigraphics NX6, Solid Edge ST and ST2, Parasolids 22.0, 21.0, 20.0 and 19.1
- **2D formats** – Mechanical Desktop versions 2010 and 2009, Smartsketch 2009, Ccreate Drafting 2008 (16.XX)
- **EDA formats** – Allegro version 16.2, Allegro Design Entity HDL 16.2, Altium Designer versions 6.6, 6.7, 6.8 and 6.9, Summer 2008, Winter 2009, and Summer 2009, Zuken Cadstar 10.0 and 11.0, OrCAD Layout & Capture 16.2
- **Office and graphic formats** – Adobe Acrobat PDF 9.0
- **Archived formats:** - TAR and GZIP

Click here for a full list of supported formats.

Contact Us

For more information about how your organization can leverage the power of Oracle's AutoVue enterprise visualization solutions, visit oracle.com/applications/autovue or call +1.800.363.5805 or +1.514.905.8400 to speak to an Oracle representative, or email autovuesales_ww@oracle.com.

Copyright © 2010, Oracle and/or its affiliates. All rights reserved.

This document is provided for information purposes only, and the contents hereof are subject to change without notice. This document is not warranted to be error-free, nor is it subject to any other warranties or conditions, whether expressed orally or implied in law, including implied warranties and conditions of merchantability or fitness for a particular purpose. We specifically disclaim any liability with respect to this document, and no contractual obligations are formed either directly or indirectly by this document. This document may not be reproduced or transmitted in any form or by any means, electronic or mechanical, for any purpose, without our prior written permission. Oracle is a registered trademark of Oracle Corporation and/or its affiliates. Other names may be trademarks of their respective owners.